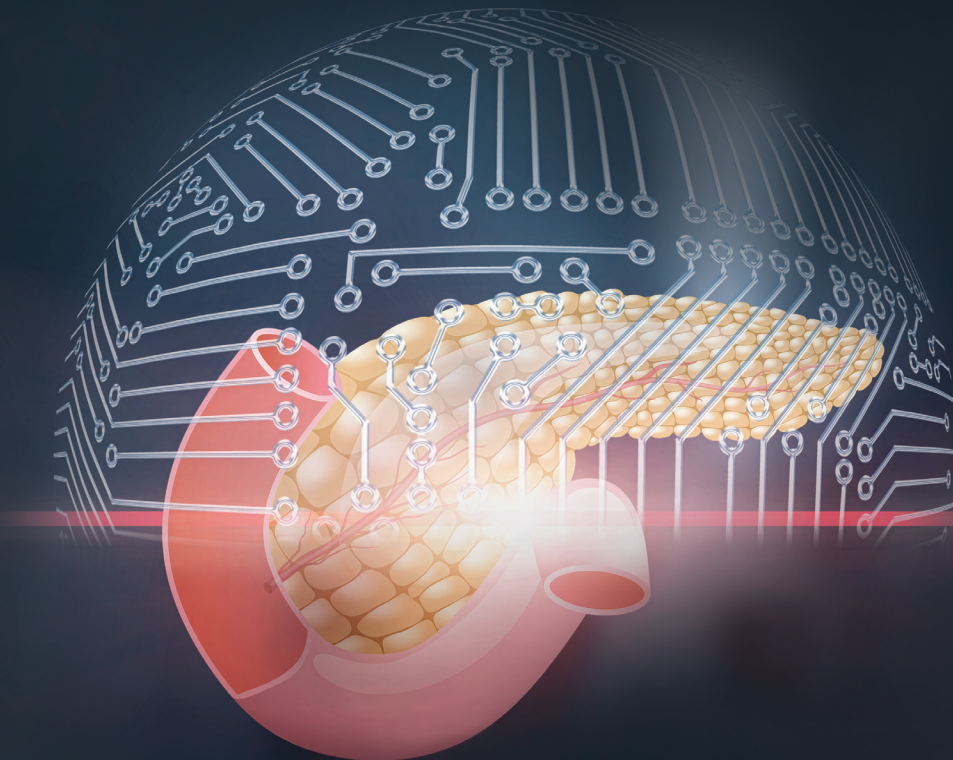


An innovative **pancreatic cancer screening** for people at high risk

IT'S HAPPENING HERE



CentraState's leading edge pancreatic cancer screening program is one of only two centers in NJ to offer the first blood test designed for the early detection of hereditary pancreatic ductal adenocarcinoma (PDAC). This novel test is just one screening option we provide as part of our unrelenting focus on the early detection of pancreatic cancer. Because when we find cancer early, we also find hope.

LEARN MORE

Visit centrastate.com/pancreatic-screening



CentraState Healthcare System®

ATLANTIC HEALTH SYSTEM PARTNER