

**Bobbi Hensey, RN and stroke care coordinator at Beebe Healthcare, has also worked in the ICU during the pandemic.**

# Don't Let COVID-19 Delay Your Stroke Care. It Could Save Your Life!

**A**n American Heart Association study at the beginning of the COVID-19 pandemic revealed that fewer people were seeking immediate care for stroke events, and the time from the onset of symptoms to treatment increased by 54 minutes. The study, which reviewed data from November 2019 to April 2020, highlights the hesitancy of patients to seek emergency care due to fear of contracting COVID-19.

The findings reinforce an important message for stroke incidents: Do not delay care. Beebe Healthcare is open, safe, and ready to care for all who live, visit, and work in Sussex County.

"Yes, COVID-19 is frightening, but more frightening is losing a loved one to something that may have been treatable," says Bobbi Hensey, a registered nurse and stroke care coordinator at Beebe. "We want to do everything we can to give the patient the best possible outcome in the safest possible way."

## Saving Time and Brain

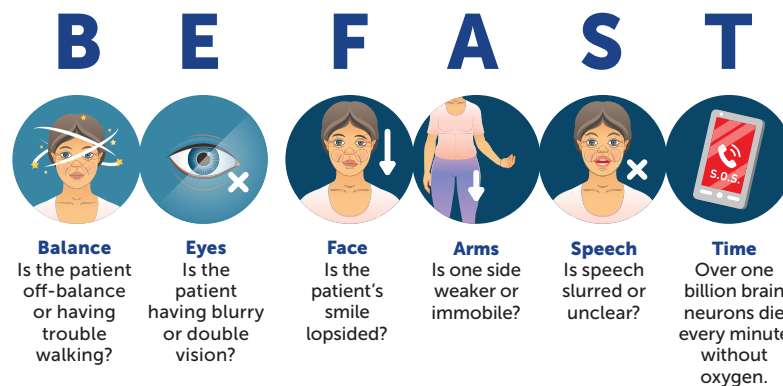
Medical professionals often say "time is brain" for stroke cases. A stroke normally occurs when the blood supply to part of the brain is interrupted. When a stroke is suspected, the priority is to quickly get the patient to an emergency room and start treatment.

Beebe has consistently received the Joint Commission's Gold Seal of Approval® for stroke care and quality achievement awards from the American Heart Association. The medical center has services to care for patients at the Margaret H. Rollins Lewes Campus, has built relationships with leading experts, and offers the continuum of care patients need when they return home.



[beebehealthcare.org/services/neurology-stroke](https://beebehealthcare.org/services/neurology-stroke)

## RECOGNIZING STROKE: TIME IS BRAIN



To further its stroke care, Beebe has expanded an innovative partnership with the Jefferson Health Neuroscience Network to include a robotic teleconferencing unit in the new South Coastal emergency department and the Lewes Campus. The goal of this partnership is to keep the patient at the local facility but with access to a wide range of experts.

"Beebe's collaboration with Jefferson Health has given us emergent access to the top neurologists in the country," Hensey says. "With our staff's assistance, Jefferson Health's neurologists use the robot to visualize and assess the patient to develop an individualized treatment plan."

## Continuing Care

Stroke recovery care is vital to returning to normal life and is often overlooked. Beebe Home

Care helps stroke patients regain functional independence and offers the skilled medical care they need. Home Care teams work with patients, their physicians, and their families to develop and manage a care plan including in-home medical services.

Additionally, Beebe's physical rehabilitation services provide individualized programs designed to help patients regain independence through physical therapy, occupational therapy, and speech or language therapy.

"Our stroke program's mission is to provide timely, patient-centered, evidence-based care to achieve the best possible outcomes for patients with signs and symptoms of acute stroke," Hensey says. "Beebe is here to save lives and get you back on track—all close to home in Sussex County."